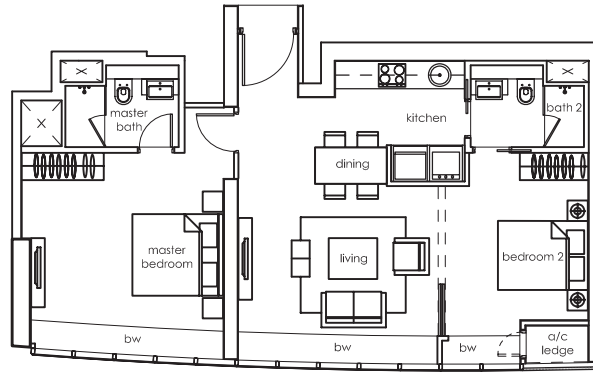


## 2-BEDROOM APARTMENT

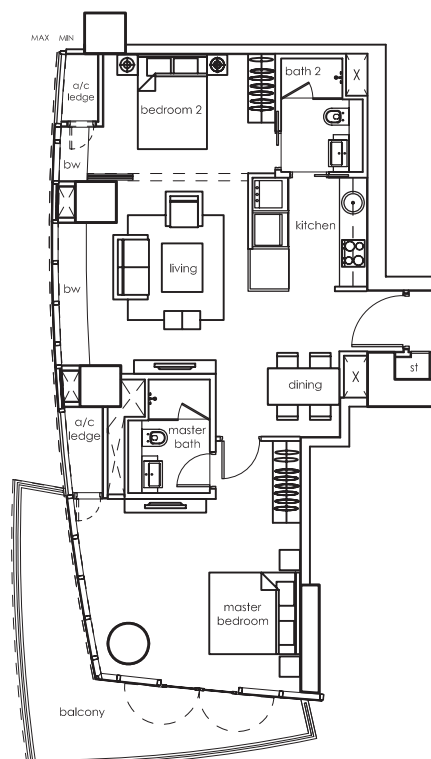
### TYPE B-2-a

#16-06 & #17-06: 84 sq m (904 sq ft)  
#33-06 & #34-06: 84 sq m (904 sq ft)  
#37-06 to #40-06: 84 sq m (904 sq ft)

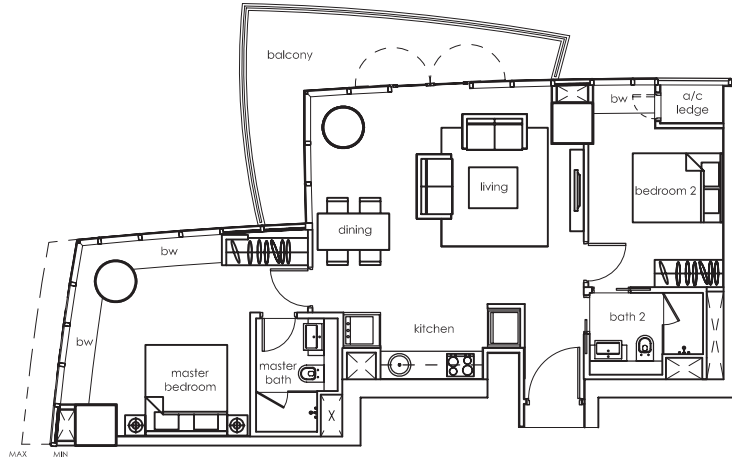


### TYPE B-2-b

#37-08 to #40-08: 102 sq m (1,098 sq ft)

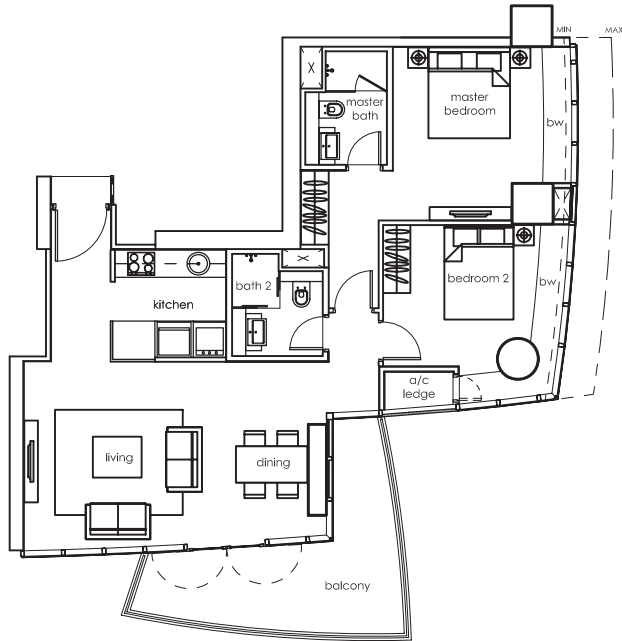


## 2-BEDROOM APARTMENT



### TYPE B-2-c

- #09-09 & #10-09: 99 sq m (1,066 sq ft)
- #11-09 & #12-09: 100 sq m (1,076 sq ft)
- #13-09 to #15-09: 101 sq m (1,087 sq ft)
- #18-09 & #19-09: 101 sq m (1,087 sq ft)
- #20-09 to #23-09: 102 sq m (1,098 sq ft)
- #28-09 to #32-09: 102 sq m (1,098 sq ft)
- #35-09 to #40-09: 102 sq m (1,098 sq ft)



### TYPE B-2-d

- #09-12 : 108 sq m (1,163 sq ft)
- #10-12 & #11-12: 109 sq m (1,173 sq ft)
- #12-12 & #13-12: 110 sq m (1,184 sq ft)
- #14-12 & #15-12: 111 sq m (1,195 sq ft)
- #16-12 & #17-12: 112 sq m (1,206 sq ft)
- #18-12 & #19-12: 113 sq m (1,216 sq ft)
- #20-12 to #23-12: 114 sq m (1,227 sq ft)
- #28-12 to #31-12: 114 sq m (1,227 sq ft)
- #32-12 : 113 sq m (1,216 sq ft)
- #33-12 & #34-12: 112 sq m (1,206 sq ft)
- #35-12 to #38-12: 111 sq m (1,195 sq ft)
- #39-12 : 109 sq m (1,173 sq ft)
- #40-12 : 108 sq m (1,163 sq ft)

