

Cost

Dismantling Works

- 1 To hack existing floors tiles at living & 2 bedrooms (or lay over existing floor tiles)

Masonry Works using HDB approved 3in1 prepack cement with homogeneous tiles

- 1 To supply & lay selected homogenous floor tiles at living and store (size based on 60x60cm) including skirting

Timber Floors

- 1 To supply & lay cement sand screeding to receive the timber flooring at 2 bedrooms (if existing floor tiles are hacked)
- 2 To supply & lay selected timber flooring at master & common bedrooms including skirting

Others

- 1 Haulage of clearing debris during renovations
- 2 To supply & paint interior walls to the whole house using Nippon Vinilex 5000 paint-max 5 colours with matt white for ceiling
- 3 General washing for the whole house after renovation works completed
- 4 Complete rewiring whole house

Optional - Kitchen & Bathrooms

Dismantling Works

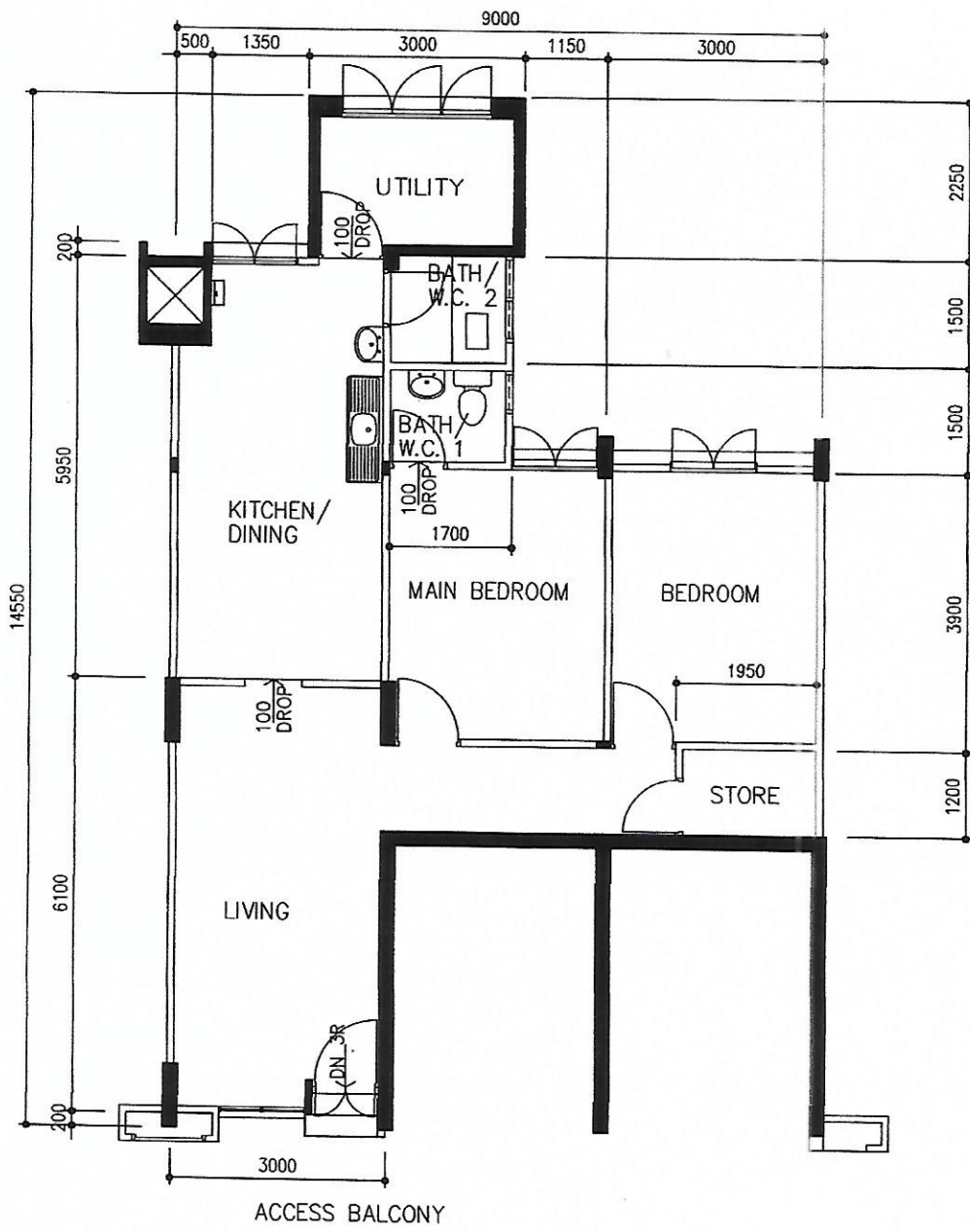
- 1 To hack existing floor & wall tiles at kitchen & 2 bathrooms
- 2 To replace existing 2 bathroom doors

Masonry Works using HDB approved 3in1 prepack cement with homogeneous tiles

- 1 To supply & lay selected homogenous floor tiles at kitchen (size based on 30x60, 60x60cm)
- 2 To supply & lay selected homogenous wall tiles at kitchen exposed areas (size based on 30x60cm)
- 3 To supply & lay selected homogenous floor tiles at master bathroom (size based on 30x30cm)
- 4 To supply & lay selected homogenous wall tiles at master bathroom (size based on 30x60cm)
- 5 To supply & lay selected homogenous floor tiles at common bathroom (size based on 30x30cm)
- 6 To supply & lay selected homogenous wall tiles at common bathroom (size based on 30x60cm)
- 7 To lay a layer of waterproofing membrane over kitchen & 2 toilets
- 8 To construct concrete base for kitchen cabinet areas

Plumbing Works - (All sanitary fittings will be purchased by client)

- 1 To supply & lay stainless steel piping at kitchen sink & for washing machine including installation of sink & tap fittings
- 2 To supply & lay stainless steel piping (cold water) include installation of WC & basins for master & common bathrooms
- 3 To supply labour to install 2 nos of instant heaters/shower at bathrooms
- 4 To supply labour to install 2 nos of bidet sprays at bathrooms
- 5 To supply labour to install bathroom accessories at bathrooms



3-ROOM NEW FLAT
(CORRIDOR)
SCALE 1:100