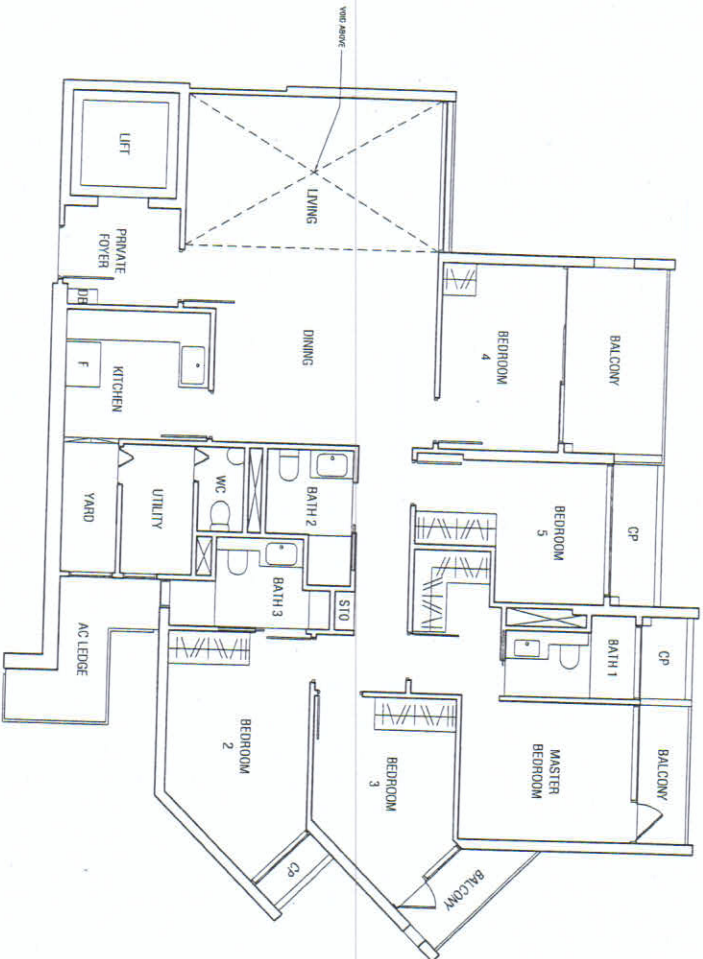


ANNEX B3

101 PRINCE CHARLES CRESCENT, #18-03 THE CREST

| NO. OF BUILDING PLANS APPROVED BY COMMISSIONER OF BUILDING CONTROL | BP NO. | DATE OF APPROVAL OF BUILDING PLANS |
|--------------------------------------------------------------------|----------------------|------------------------------------|
| | A814-00018-2012-BR01 | 18 FEBRUARY 2014 |
| | A814-00018-2012-BR02 | 02 APRIL 2014 |
| | A814-00018-2012-BR03 | 05 OCTOBER 2014 |
| | A814-00018-2012-BR04 | 16 JUNE 2015 |
| | A814-00018-2012-BR05 | 15 JULY 2015 |
| | A814-00018-2012-BR06 | 11 NOVEMBER 2016 |

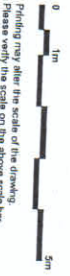


LEGEND :

- CP - Communal Planter
- DB - Distribution Board
- STO - Store
- F - Fridge

TYPE 5BR+M-A2

Area: 171 sqm (1,841 sqft)



X

27 APR 2017