

2R-PB(E)-1B & 1B(H)

5850

6925

MAIN BEDROOM

LIVING/DINING

BATH/
WC

AIR-CON
LEDGE

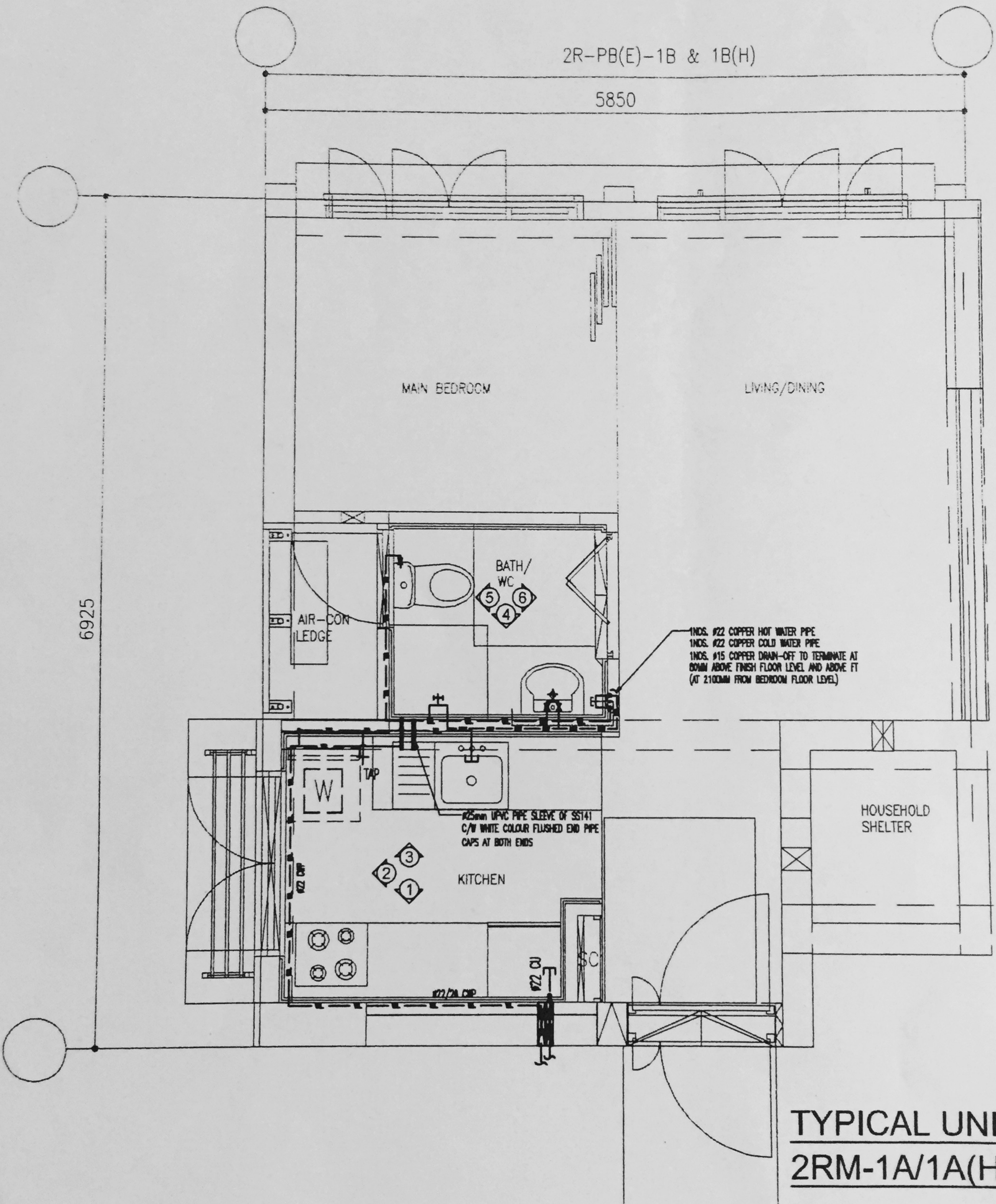
1 NOS. #22 COPPER HOT WATER PIPE
1 NOS. #22 COPPER COLD WATER PIPE
1 NOS. #15 COPPER DRAIN-OFF TO TERMINATE AT
80MM ABOVE FINISH FLOOR LEVEL AND ABOVE FT
(AT 2100MM FROM BEDROOM FLOOR LEVEL)

#25mm UPVC PIPE SLEEVE OF SS141
C/W WHITE COLOUR FLUSHED END PIPE
CAPS AT BOTH ENDS

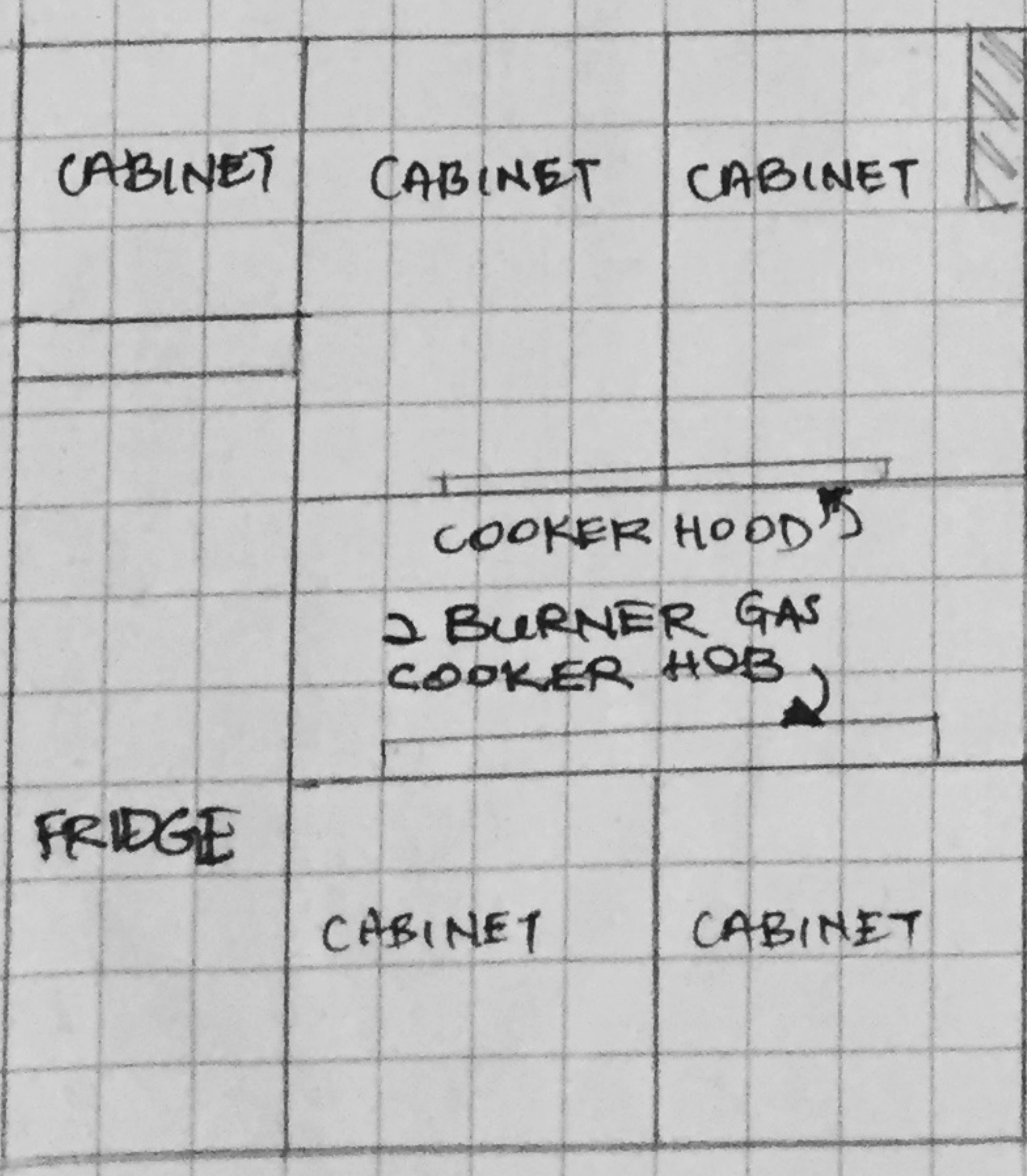
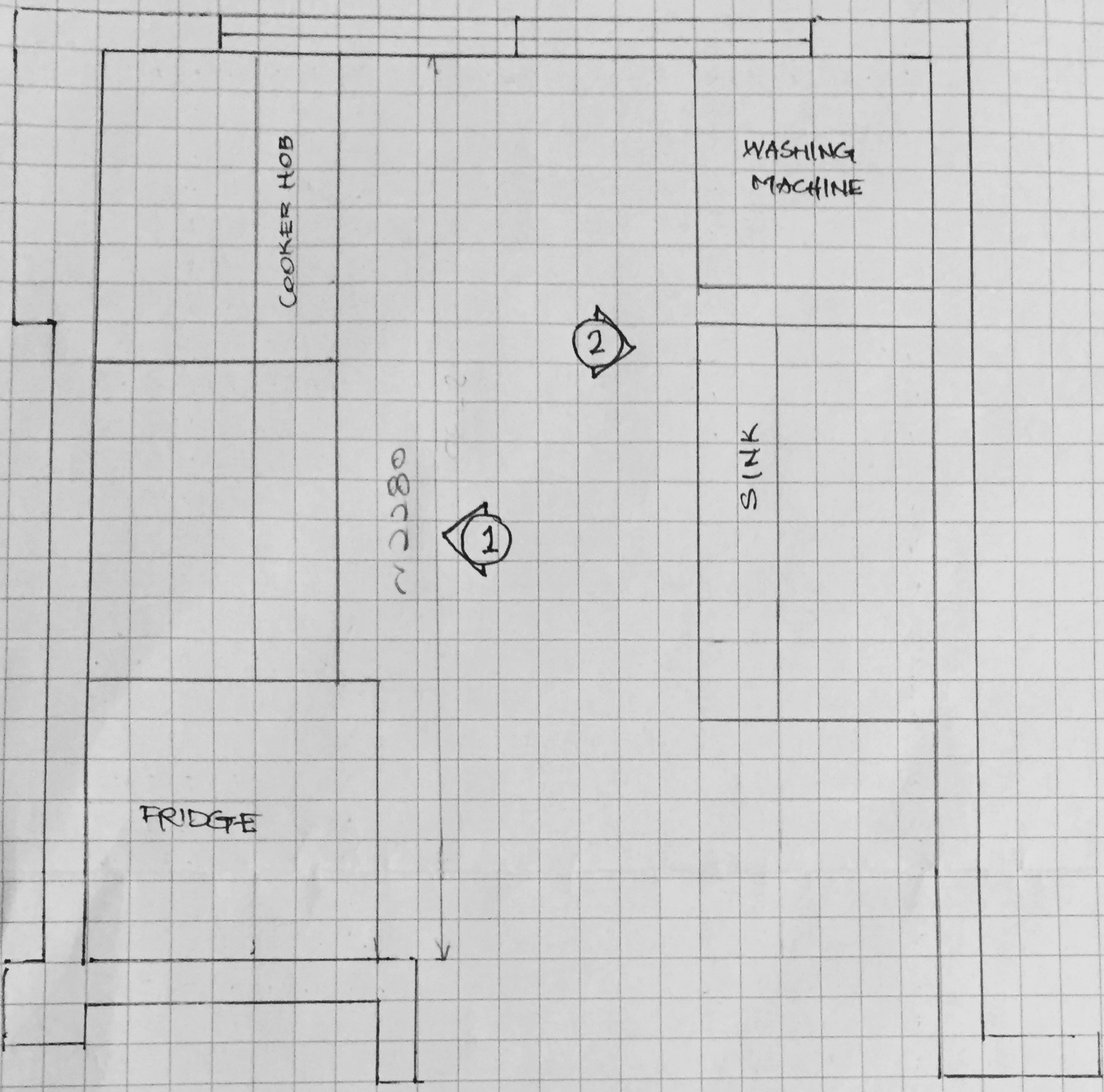
KITCHEN

HOUSEHOLD
SHELTER

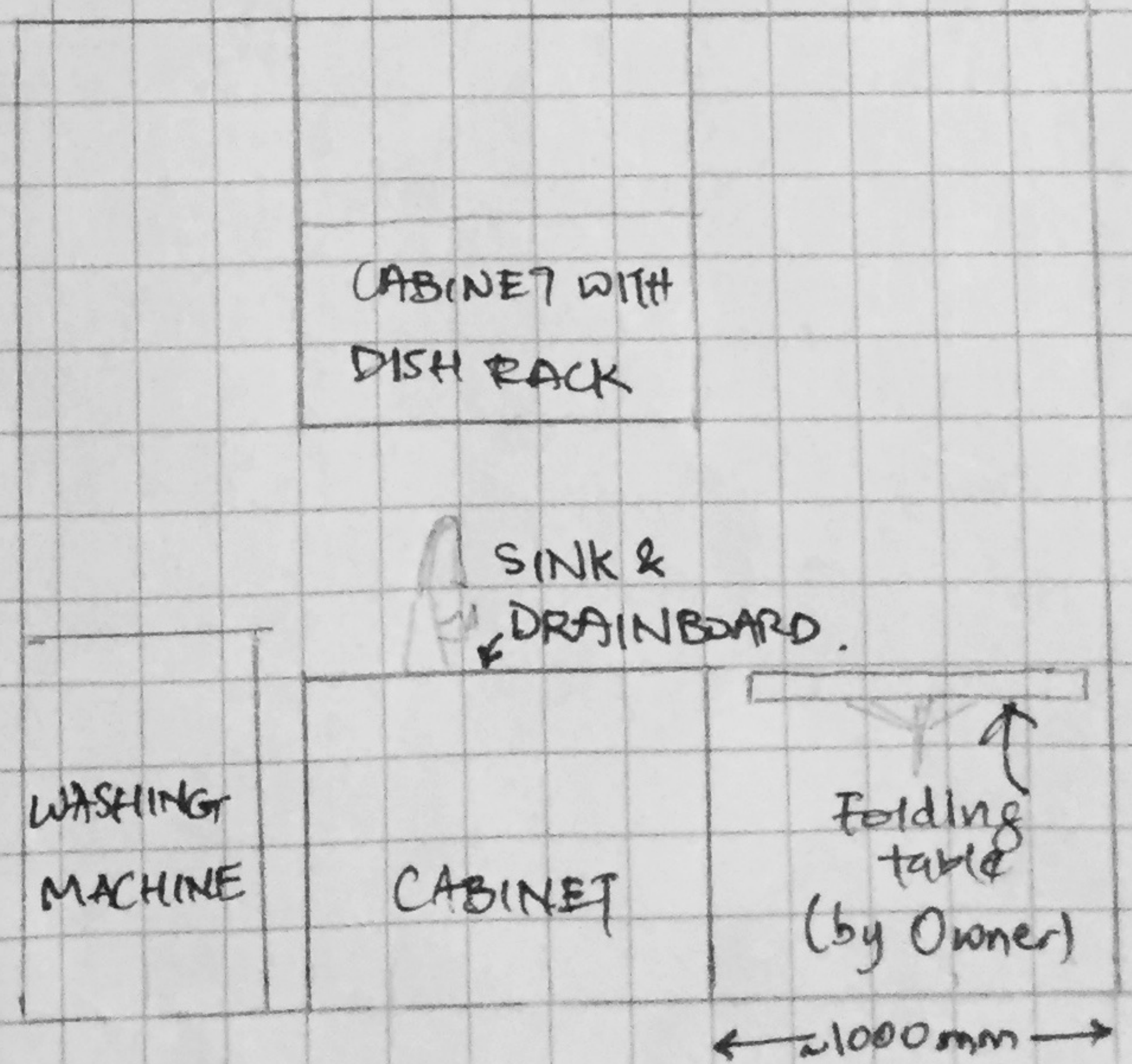
TYPICAL UNIT TYPE
2RM-1A/1A(H)



~2090



VIEW 1.



VIEW 2