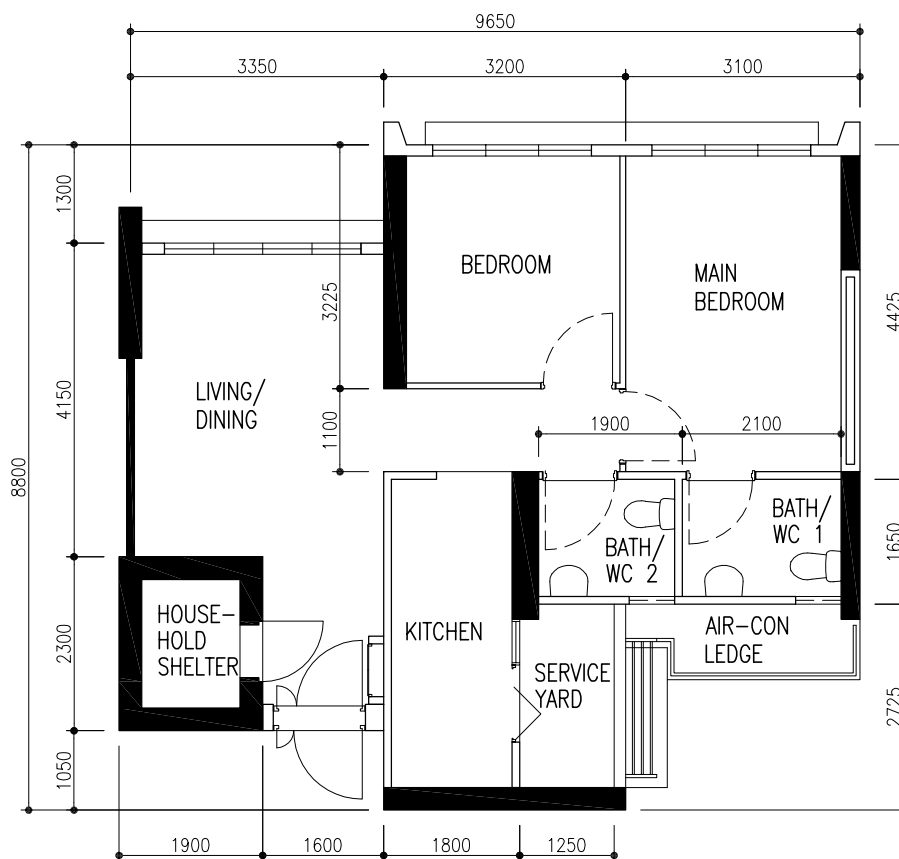


*PLEASE REFER TO BLOCK PLAN FOR POSITION OF
FINS/WALL AT EXTERNAL FACADE



3 Room Apartment

Type - 2(H)

Floor Area: 68 m² (inclusive of Internal Floor Area of 65 m² and A/C ledge)

Internal Floor Area is computed from the centre-line of the walls of the flat

Blk 590B

- #02-19 #18-19
- #03-19 #19-19
- #04-19 #20-19
- #05-19 #21-19
- #06-19 #22-19
- #07-19 #23-19
- #08-19 #24-19
- #09-19 #25-19
- #10-19 #26-19
- #11-19 #27-19
- #12-19 #28-19
- #13-19 #29-19
- #14-19 #30-19
- #15-19 #31-19
- #16-19 #32-19
- #17-19

The layout is indicative only and is subject to change without prior notice. All dimensions shown on the unit floor plans are in millimetres and provide approximate measurements only and are subject to variation. The final strata area will be based on the survey plan approved by the Chief Surveyor, Singapore. Dimensions, which are taken from the indicated points of measurement are for guidance only and are not intended to be used for interior design purposes, furniture or fittings.